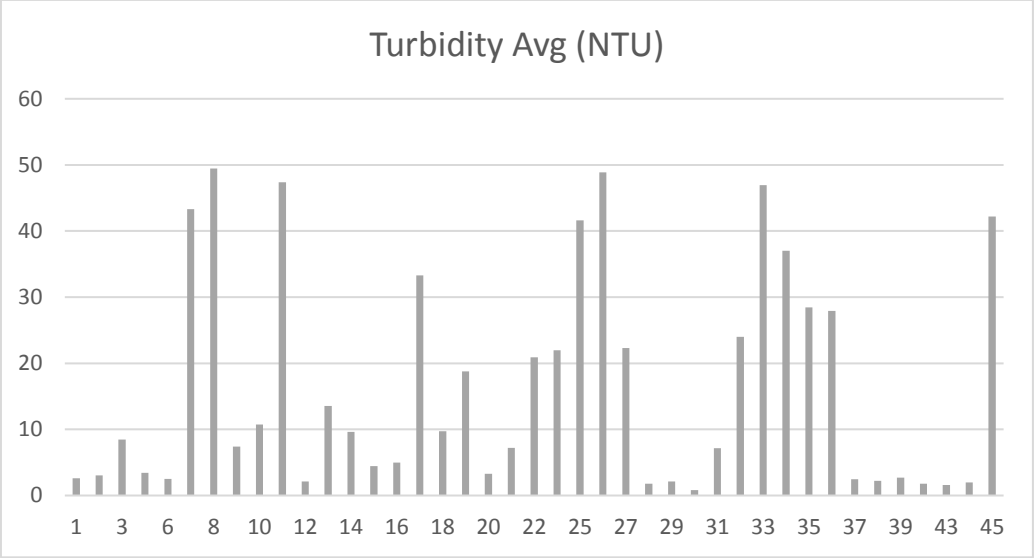


Turbidity Results

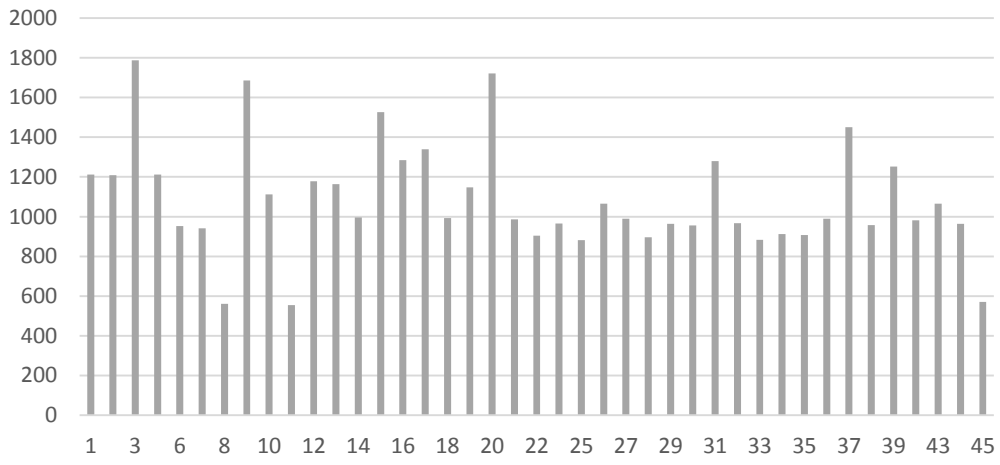
Sample #	Site Location	Turbidity Avg (NTU)	Analyst's Initials
1	West Fork at Beckman St	2.6	DE
2	West Fork at Powers St	3.04	DE
3	West Fork at Kleeman Ct	8.44	DE
4	Congress Run at Hartwell Golf Club	3.41	DE
6	Amberley Creek near Ellbrook Ave	2.5	DE
7	Amberley Creek at Stillwell	43.3	DE
8	West Fork Mill Creek at Galbraith Rd. Bridge	49.45	DE
9	Fox Run Tributary to Cooper Creek	7.38	DE
10	Main Stem at Columbia Ave.	10.75	DE
11	West Fork Mill Creek from Oak Ave.	47.4	DE
12	Cooper Creek at Reading Road	2.14	DE
13	Mill Creek Main Stem at Cunningham Drive	13.55	DE
14	Sharon Creek at Exon Avenue	9.62	DE
15	Tributary to Sharon Creek	4.44	DE
16	Town Run at Kenwood Road	4.99	DE
17	Unnamed Tributary by Kemper Rd	33.3	DE
18	West Fork Mill Creek at Hanover Rd	9.72	DE
19	Mill Creek Main Stem at Kemper Rd. Bridge	18.75	DE
20	Beaver Run at Chesterwood Court	3.3	DE
21	Minuteman Trib to East Fork	7.22	DE
22	Mill Creek Main Stem at Rialto Rd	20.9	DE
24	Mill Creek Main Stem at Yellow Bridge	21.95	DE
25	Mill Creek Main Stem at US 50 Bridge	41.6	DE
26	Lick Run at Mouth to Mill Creek Main Stem	48.9	DE
27	Mill Creek Main Stem at Center Hill Bridge	22.3	DE
28	Mill Creek Headwaters at Stone Creek Drive	1.77	DE
29	Tylersville Road Mill Creek Main Stem	2.14	DE
30	Union Centre Blvd Trib to Main Stem	0.79	DE
31	Unnamed Trib to Main Stem UMC	7.14	DE
32	Highway 747 Bridge Mill Creek Main Stem	24	DE
33	Muhlhauser Road Mill Creek Main Stem	46.95	DE
34	Windisch Road Mill Creek Main Stem	37	DE
35	TCP Upper Mill Creek Main Stem	28.45	DE
36	TCP Lower Mill Creek Main Stem	27.9	DE
37	TCP Lower East Fork Mill Creek	2.48	DE
38	Trib to Sharon Creek at Reading Road	2.22	DE
39	Crescentville Road East Fork Mill Creek	2.7	DE
40	Allen Road East Fork Mill Creek	1.78	DE
43	West Chester Road East Fork Mill Creek	1.58	DE
44	Keehner Park East Fork Mill Creek	1.99	DE
45	Cooper Avenue West Fork Mill Creek	42.2	DE



Conductivity Results

Sample #	Site Location	Conductivity Avg (μ S)	Analyst's Initials	
1	West Fork at Beckman St	1212	JG	
2	West Fork at Powers St	1209	JG	
3	West Fork at Kleeman Ct	1788	JG	
4	Congress Run at Hartwell Golf Club	1212	JG	
6	Amberley Creek near Ellbrook Ave	953	JG	
7	Amberley Creek at Stillwell	941	JG	
8	West Fork Mill Creek at Galbraith Rd. Bridge	560	JG	
9	Fox Run Tributary to Cooper Creek	1686	JG	
10	Main Stem at Columbia Ave.	1112	JG	
11	West Fork Mill Creek from Oak Ave.	555	JG	
12	Cooper Creek at Reading Road	1178	JG	
13	Mill Creek Main Stem at Cunningham Drive	1163	JG	
14	Sharon Creek at Exon Avenue	996	JG	
15	Tributary to Sharon Creek	1527	JG	SR
16	Town Run at Kenwood Road	1284	JG	SR
17	Unnamed Tributary by Kemper Rd	1339	JG	SR
18	West Fork Mill Creek at Hanover Rd	993	JG	SR
19	Mill Creek Main Stem at Kemper Rd. Bridge	1148	JG	SR
20	Beaver Run at Chesterwood Court	1721	JG	SR
21	Minuteman Trib to East Fork	986	JG	SR
22	Mill Creek Main Stem at Rialto Rd	904	JG	SR
24	Mill Creek Main Stem at Yellow Bridge	965	JG	SR
25	Mill Creek Main Stem at US 50 Bridge	882	JG	SR
26	Lick Run at Mouth to Mill Creek Main Stem	1065	JG	SR
27	Mill Creek Main Stem at Center Hill Bridge	989	JG	SR
28	Mill Creek Headwaters at Stone Creek Drive	896	JG	SR
29	Tylersville Road Mill Creek Main Stem	963	JG	SR
30	Union Centre Blvd Trib to Main Stem	955	JG	SR
31	Unnamed Trib to Main Stem UMC	1280	JG	SR
32	Highway 747 Bridge Mill Creek Main Stem	967	JG	SR
33	Muhlhauser Road Mill Creek Main Stem	883	JG	SR
34	Windisch Road Mill Creek Main Stem	912	JG	SR
35	TCP Upper Mill Creek Main Stem	908	JG	SR
36	TCP Lower Mill Creek Main Stem	989	LG	SR
37	TCP Lower East Fork Mill Creek	1450	JG	SR
38	Trib to Sharon Creek at Reading Road	957	JG	SR
39	Crescentville Road East Fork Mill Creek	1253	JG	SR
40	Allen Road East Fork Mill Creek	981	JG	SR
43	West Chester Road East Fork Mill Creek	1065	JG	SR
44	Keehner Park East Fork Mill Creek	963	JG	SR
45	Cooper Avenue West Fork Mill Creek	570	JG	SR

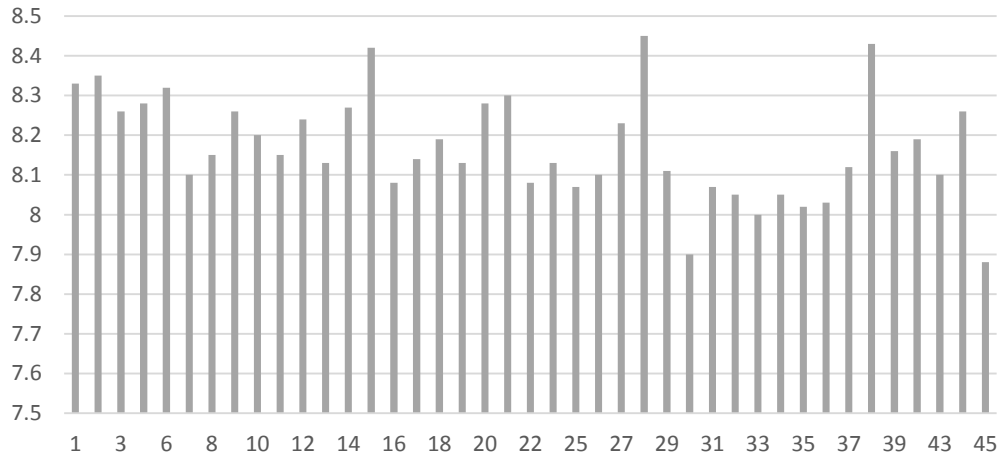
Conductivity Avg (μS)



pH Results

Sample #	Site Location	pH Average	Analyst's Initials
1	West Fork at Beckman St	8.33	LS
2	West Fork at Powers St	8.35	LS
3	West Fork at Kleeman Ct	8.26	LS
4	Congress Run at Hartwell Golf Club	8.28	LS
6	Amberley Creek near Ellbrook Ave	8.32	LS
7	Amberley Creek at Stillwell	8.1	LS
8	West Fork Mill Creek at Galbraith Rd. Bridge	8.15	LS
9	Fox Run Tributary to Cooper Creek	8.26	LS
10	Main Stem at Columbia Ave.	8.2	LS
11	West Fork Mill Creek from Oak Ave.	8.15	LS
12	Cooper Creek at Reading Road	8.24	LS
13	Mill Creek Main Stem at Cunningham Drive	8.13	LS
14	Sharon Creek at Exon Avenue	8.27	LS
15	Tributary to Sharon Creek	8.42	LS
16	Town Run at Kenwood Road	8.08	LS
17	Unnamed Tributary by Kemper Rd	8.14	LS
18	West Fork Mill Creek at Hanover Rd	8.19	LS
19	Mill Creek Main Stem at Kemper Rd. Bridge	8.13	LS
20	Beaver Run at Chesterwood Court	8.28	LS
21	Minuteman Trib to East Fork	8.3	LS
22	Mill Creek Main Stem at Rialto Rd	8.08	LS
24	Mill Creek Main Stem at Yellow Bridge	8.13	LS
25	Mill Creek Main Stem at US 50 Bridge	8.07	LS
26	Lick Run at Mouth to Mill Creek Main Stem	8.1	LS
27	Mill Creek Main Stem at Center Hill Bridge	8.23	LS
28	Mill Creek Headwaters at Stone Creek Drive	8.45	LS
29	Tylersville Road Mill Creek Main Stem	8.11	LS
30	Union Centre Blvd Trib to Main Stem	7.9	LS
31	Unnamed Trib to Main Stem UMC	8.07	LS
32	Highway 747 Bridge Mill Creek Main Stem	8.05	LS
33	Muhlhauser Road Mill Creek Main Stem	8	LS
34	Windisch Road Mill Creek Main Stem	8.05	LS
35	TCP Upper Mill Creek Main Stem	8.02	LS
36	TCP Lower Mill Creek Main Stem	8.03	LS
37	TCP Lower East Fork Mill Creek	8.12	LS
38	Trib to Sharon Creek at Reading Road	8.43	LS
39	Crescentville Road East Fork Mill Creek	8.16	LS
40	Allen Road East Fork Mill Creek	8.19	LS
43	West Chester Road East Fork Mill Creek	8.1	LS
44	Keehner Park East Fork Mill Creek	8.26	LS
45	Cooper Avenue West Fork Mill Creek	7.88	LS

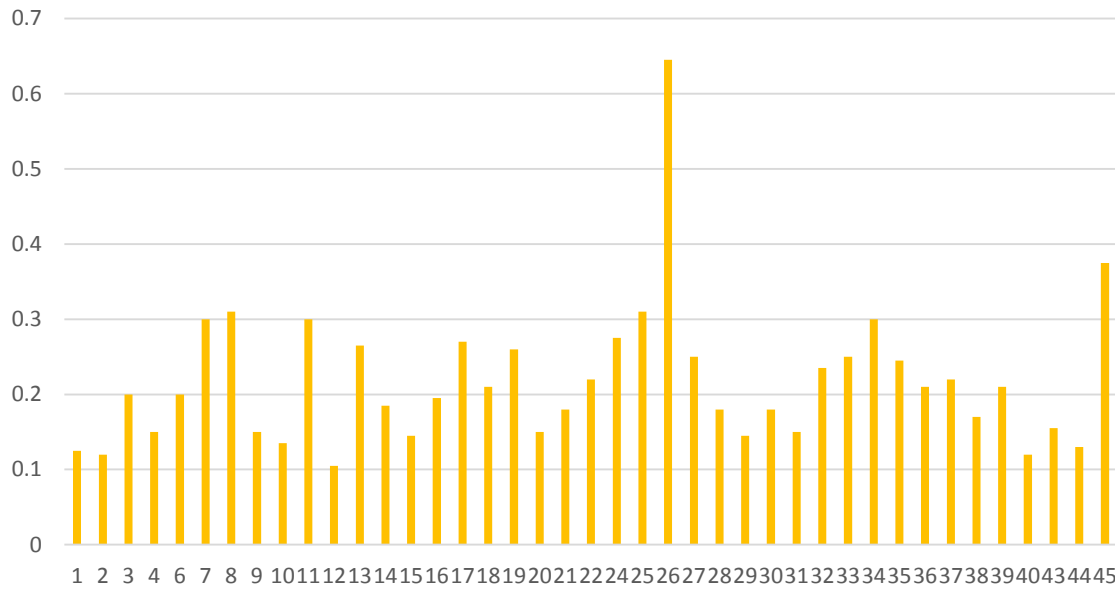
pH Average



Total Phosphorus Results

Sample #	Site Location	TP Average (mg/l)	Analyst's Initials	
1	West Fork at Beckman St	0.125	AF	BM
2	West Fork at Powers St	0.12	AF	BM
3	West Fork at Kleeman Ct	0.2	AF	BM
4	Congress Run at Hartwell Golf Club	0.15	AF	BM
6	Amberley Creek near Ellbrook Ave	0.2	AF	BM
7	Amberley Creek at Stillwell	0.3	AF	BM
8	West Fork Mill Creek at Galbraith Rd. Bridge	0.31	AF	BM
9	Fox Run Tributary to Cooper Creek	0.15	BM	AF
10	Main Stem at Columbia Ave.	0.135	BM	AF
11	West Fork Mill Creek from Oak Ave.	0.3	BM	AF
12	Cooper Creek at Reading Road	0.105	AF	BM
13	Mill Creek Main Stem at Cunningham Drive	0.265	AF	BM
14	Sharon Creek at Exon Avenue	0.185	AF	BM
15	Tributary to Sharon Creek	0.145	AF	BM
16	Town Run at Kenwood Road	0.195	AF	BM
17	Unnamed Tributary by Kemper Rd	0.27	AF	BM
18	West Fork Mill Creek at Hanover Rd	0.21	AF	BM
19	Mill Creek Main Stem at Kemper Rd. Bridge	0.26	AF	BM
20	Beaver Run at Chesterwood Court	0.15	AF	BM
21	Minuteman Trib to East Fork	0.18	AF	BM
22	Mill Creek Main Stem at Rialto Rd	0.22	BM	AF
24	Mill Creek Main Stem at Yellow Bridge	0.275	AF	BM
25	Mill Creek Main Stem at US 50 Bridge	0.31	AF	BM
26	Lick Run at Mouth to Mill Creek Main Stem	0.645	AF	BM
27	Mill Creek Main Stem at Center Hill Bridge	0.25	AF	BM
28	Mill Creek Headwaters at Stone Creek Drive	0.18	AF	BM
29	Tylersville Road Mill Creek Main Stem	0.145	AF	BM
30	Union Centre Blvd Trib to Main Stem	0.18	AF	BM
31	Unnamed Trib to Main Stem UMC	0.15	AF	BM
32	Highway 747 Bridge Mill Creek Main Stem	0.235	AF	BM
33	Muhlhauser Road Mill Creek Main Stem	0.25	AF	BM
34	Windisch Road Mill Creek Main Stem	0.3	AF	BM
35	TCP Upper Mill Creek Main Stem	0.245	AF	BM
36	TCP Lower Mill Creek Main Stem	0.21	AF	BM
37	TCP Lower East Fork Mill Creek	0.22	AF	BM
38	Trib to Sharon Creek at Reading Road	0.17	AF	BM
39	Crescentville Road East Fork Mill Creek	0.21	AF	BM
40	Allen Road East Fork Mill Creek	0.12	AF	BM
43	West Chester Road East Fork Mill Creek	0.155	AF	BM
44	Keehner Park East Fork Mill Creek	0.13	AF	BM
45	Cooper Avenue West Fork Mill Creek	0.375	AF	BM
1		0.12	AF	BM
44		0.155	AF	BM

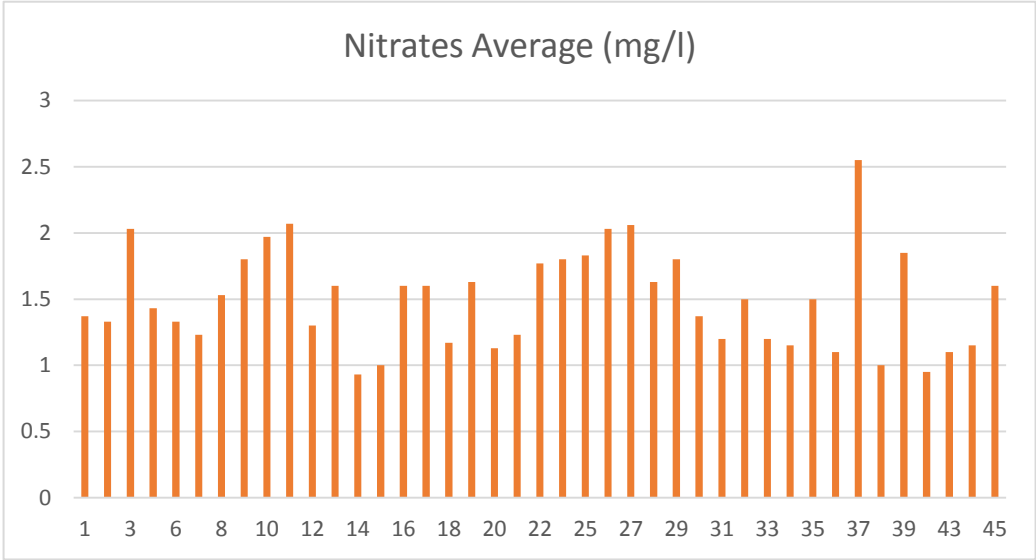
TP Average (mg/l)



Nitrate Results

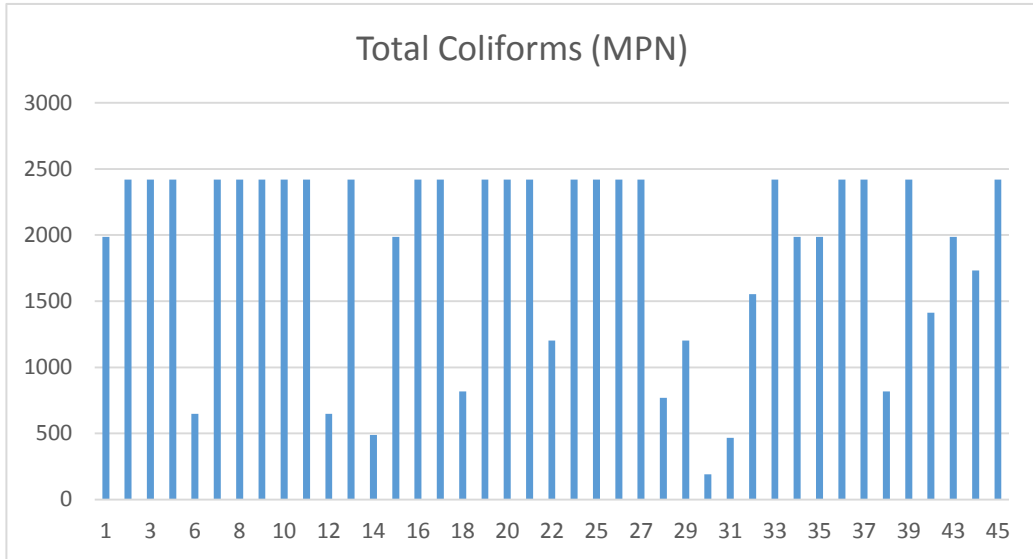
Sample #	Site Location	Nitrates Average (mg/l)	Analyst's Initials	
1	West Fork at Beckman St	1.37	AF	BM
2	West Fork at Powers St	1.33	AF	BM
3	West Fork at Kleeman Ct	2.03	AF	BM
4	Congress Run at Hartwell Golf Club	1.43	AF	BM
6	Amberley Creek near Ellbrook Ave	1.33	AF	BM
7	Amberley Creek at Stillwell	1.23	AF	BM
8	West Fork Mill Creek at Galbraith Rd. Bridge	1.53	AF	BM
9	Fox Run Tributary to Cooper Creek	1.8	AF	BM
10	Main Stem at Columbia Ave.	1.97	AF	BM
11	West Fork Mill Creek from Oak Ave.	2.07	AF	BM
12	Cooper Creek at Reading Road	1.3	AF	BM
13	Mill Creek Main Stem at Cunningham Drive	1.6	AF	BM
14	Sharon Creek at Exon Avenue	0.93	AF	BM
15	Tributary to Sharon Creek	1	AF	BM
16	Town Run at Kenwood Road	1.6	AF	BM
17	Unnamed Tributary by Kemper Rd	1.6	AF	BM
18	West Fork Mill Creek at Hanover Rd	1.17	AF	BM
19	Mill Creek Main Stem at Kemper Rd. Bridge	1.63	AF	BM
20	Beaver Run at Chesterwood Court	1.13	AF	BM
21	Minuteman Trib to East Fork	1.23	AF	BM
22	Mill Creek Main Stem at Rialto Rd	1.77	AF	BM
24	Mill Creek Main Stem at Yellow Bridge	1.8	AF	BM
25	Mill Creek Main Stem at US 50 Bridge	1.83	AF	BM
26	Lick Run at Mouth to Mill Creek Main Stem	2.03	AF	BM
27	Mill Creek Main Stem at Center Hill Bridge	2.06	AF	BM
28	Mill Creek Headwaters at Stone Creek Drive	1.63	AF	BM
29	Tylersville Road Mill Creek Main Stem	1.8	AF	BM
30	Union Centre Blvd Trib to Main Stem	1.37	AF	BM
31	Unnamed Trib to Main Stem UMC	1.2	AF	BM
32	Highway 747 Bridge Mill Creek Main Stem	1.5	AF	BM
33	Muhlhauser Road Mill Creek Main Stem	1.2	AF	BM
34	Windisch Road Mill Creek Main Stem	1.15	AF	BM
35	TCP Upper Mill Creek Main Stem	1.5	AF	BM
36	TCP Lower Mill Creek Main Stem	1.1	AF	BM
37	TCP Lower East Fork Mill Creek	2.55	AF	BM
38	Trib to Sharon Creek at Reading Road	1	AF	BM
39	Crescentville Road East Fork Mill Creek	1.85	AF	BM
40	Allen Road East Fork Mill Creek	0.95	AF	BM
43	West Chester Road East Fork Mill Creek	1.1	AF	BM
44	Keehner Park East Fork Mill Creek	1.15	AF	BM
45	Cooper Avenue West Fork Mill Creek	1.6	AF	BM

1 1.47 AF BM
44 1 AF BM



Total Coliforms Results

Sample #	Site Location	Total Coliforms (MPN)	Over 2419.6	Analyst's Initials
1	West Fork at Beckman St	1986.3	FALSE	KS
2	West Fork at Powers St	2419.6	FALSE	KS
3	West Fork at Kleeman Ct	2419.6	TRUE	KS
4	Congress Run at Hartwell Golf Club	2419.6	TRUE	KS
6	Amberley Creek near Ellbrook Ave	648.8	FALSE	KS
7	Amberley Creek at Stillwell	2419.6	TRUE	KS
8	West Fork Mill Creek at Galbraith Rd. Bridge	2419.6	TRUE	KS
9	Fox Run Tributary to Cooper Creek	2419.6	TRUE	KS
10	Main Stem at Columbia Ave.	2419.6	TRUE	KS
11	West Fork Mill Creek from Oak Ave.	2419.6	TRUE	KS
12	Cooper Creek at Reading Road	648.8	FALSE	KS
13	Mill Creek Main Stem at Cunningham Drive	2419.6	TRUE	KS
14	Sharon Creek at Exon Avenue	488.4	FALSE	KS
15	Tributary to Sharon Creek	1986.3	FALSE	KS
16	Town Run at Kenwood Road	2419.6	TRUE	KS
17	Unnamed Tributary by Kemper Rd	2419.6	TRUE	KS
18	West Fork Mill Creek at Hanover Rd	816.4	FALSE	KS
19	Mill Creek Main Stem at Kemper Rd. Bridge	2419.6	TRUE	KS
20	Beaver Run at Chesterwood Court	2419.6	TRUE	KS
21	Minuteman Trib to East Fork	2419.6	TRUE	KS
22	Mill Creek Main Stem at Rialto Rd	1203.3	FALSE	KS
24	Mill Creek Main Stem at Yellow Bridge	2419.6	TRUE	KS
25	Mill Creek Main Stem at US 50 Bridge	2419.6	TRUE	KS
26	Lick Run at Mouth to Mill Creek Main Stem	2419.6	TRUE	KS
27	Mill Creek Main Stem at Center Hill Bridge	2419.6	TRUE	KS
28	Mill Creek Headwaters at Stone Creek Drive	770.1	FALSE	KS
29	Tylersville Road Mill Creek Main Stem	1203.3	FALSE	KS
30	Union Centre Blvd Trib to Main Stem	190.4	FALSE	KS
31	Unnamed Trib to Main Stem UMC	467.4	FALSE	KS
32	Highway 747 Bridge Mill Creek Main Stem	1553.1	FALSE	KS
33	Muhlhauser Road Mill Creek Main Stem	2419.6	FALSE	KS
34	Windisch Road Mill Creek Main Stem	1986.3	FALSE	KS
35	TCP Upper Mill Creek Main Stem	1986.3	FALSE	KS
36	TCP Lower Mill Creek Main Stem	2419.6	TRUE	KS
37	TCP Lower East Fork Mill Creek	2419.6	TRUE	KS
38	Trib to Sharon Creek at Reading Road	816.4	FALSE	KS
39	Crescentville Road East Fork Mill Creek	2419.6	TRUE	KS
40	Allen Road East Fork Mill Creek	1413.6	FALSE	KS
43	West Chester Road East Fork Mill Creek	1986.3	FALSE	KS
44	Keehner Park East Fork Mill Creek	1732.9	FALSE	KS
45	Cooper Avenue West Fork Mill Creek	2419.6	TRUE	KS



E. coli Results

Sample #	Site Location	E. coli (MPN)	Over 2419.6	Analyst's Initials
28	Mill Creek Headwaters at Stone Creek Drive	133.3	FALSE	KS
1	West Fork at Beckman St	117.8	FALSE	KS
2	West Fork at Powers St	110	FALSE	KS
3	West Fork at Kleeman Ct	201.4	FALSE	KS
4	Congress Run at Hartwell Golf Club	2419.6	TRUE	KS
6	Amberley Creek near Ellbrook Ave	142.1	FALSE	KS
7	Amberley Creek at Stillwell	2419.6	TRUE	KS
8	West Fork Mill Creek at Galbraith Rd. Bridge	461.1	FALSE	KS
9	Fox Run Tributary to Cooper Creek	2419.6	TRUE	KS
10	Main Stem at Columbia Ave.	2419.6	TRUE	KS
11	West Fork Mill Creek from Oak Ave.	686.7	FALSE	KS
12	Cooper Creek at Reading Road	82	FALSE	KS
13	Mill Creek Main Stem at Cunningham Drive	2419.6	TRUE	KS
14	Sharon Creek at Exon Avenue	56.3	FALSE	KS
15	Tributary to Sharon Creek	240	FALSE	KS
16	Town Run at Kenwood Road	2419.6	FALSE	KS
17	Unnamed Tributary by Kemper Rd	1299.7	FALSE	KS
18	West Fork Mill Creek at Hanover Rd	137.6	FALSE	KS
19	Mill Creek Main Stem at Kemper Rd. Bridge	2419.6	TRUE	KS
20	Beaver Run at Chesterwood Court	770.1	FALSE	KS
21	Minuteman Trib to East Fork	307.6	FALSE	KS
22	Mill Creek Main Stem at Rialto Rd	209.8	FALSE	KS
24	Mill Creek Main Stem at Yellow Bridge	272.3	FALSE	KS
25	Mill Creek Main Stem at US 50 Bridge	1986.3	FALSE	KS
26	Lick Run at Mouth to Mill Creek Main Stem	2419.6	TRUE	KS
27	Mill Creek Main Stem at Center Hill Bridge	816.4	FALSE	KS
29	Tylersville Road Mill Creek Main Stem	156.5	FALSE	KS
30	Union Centre Blvd Trib to Main Stem	35.5	FALSE	KS
31	Unnamed Trib to Main Stem UMC	184.2	FALSE	KS
32	Highway 747 Bridge Mill Creek Main Stem	272.3	FALSE	KS
33	Muhlhauser Road Mill Creek Main Stem	116.2	FALSE	KS
34	Windisch Road Mill Creek Main Stem	117.8	FALSE	KS
35	TCP Upper Mill Creek Main Stem	91.2	FALSE	KS
36	TCP Lower Mill Creek Main Stem	76.8	FALSE	KS
37	TCP Lower East Fork Mill Creek	2419.6	TRUE	KS
38	Trib to Sharon Creek at Reading Road	275.5	FALSE	KS
39	Crescentville Road East Fork Mill Creek	2419.6	TRUE	KS
40	Allen Road East Fork Mill Creek	72.7	FALSE	KS
43	West Chester Road East Fork Mill Creek	613.1	FALSE	KS
44	Keehner Park East Fork Mill Creek	37.3	FALSE	KS
45	Cooper Avenue West Fork Mill Creek	816.4	FALSE	KS

